

# BGT



■ 實際減速比對照表 Actual Ratio Table

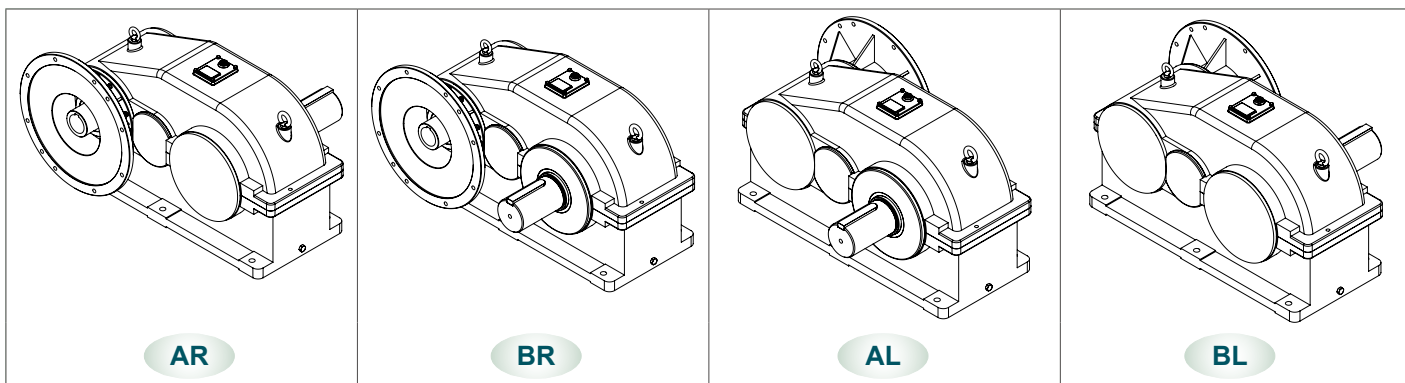
型號 Model	功率 Power HP (4P)	減速比 Ratio	實際減速比 Actual Ratio
150	75 / 100	15	14.36
		20	20.8
		30	29.36
	125	10	10.147
		20	20.8
		30	29.36
150	10	10.147	
	20	20.45	
	30	29.36	

## Indication of Model Numbers

### 機種型號表示

BGT	150	- 20 -	125	M	- A	R
減速機型 Type	型號 Model	減速比 Ratio	馬力 Horse Power	入力表示 Input	安裝方向 Installation Direction	軸向 Shaft Direction
BGT	150	10 15 20 30	75HP 100HP 125HP 150HP (4P)	M: 馬達直結式 Motor Direct-Coupling D: 入力軸式 Input Shaft B: 入力法蘭式 Input Flange	A B	R: 右軸 Right Shaft L: 左軸 Left Shaft

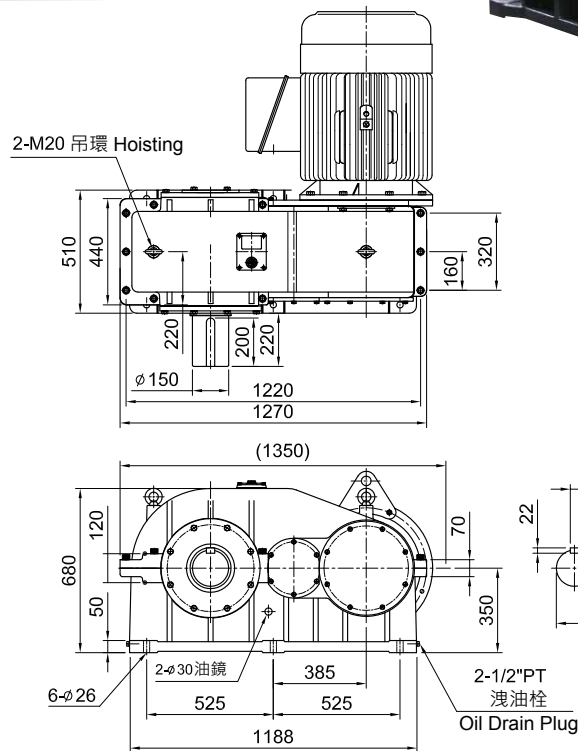
## ■ 安裝方向 Installation Direction



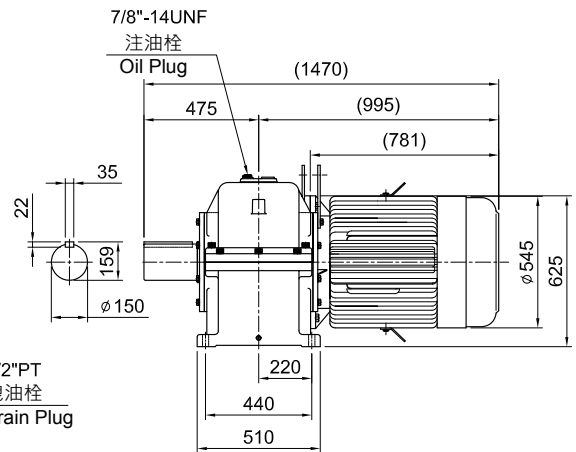
**MODEL : BGT150 □ M**

RATIO : 10, 15, 20, 30

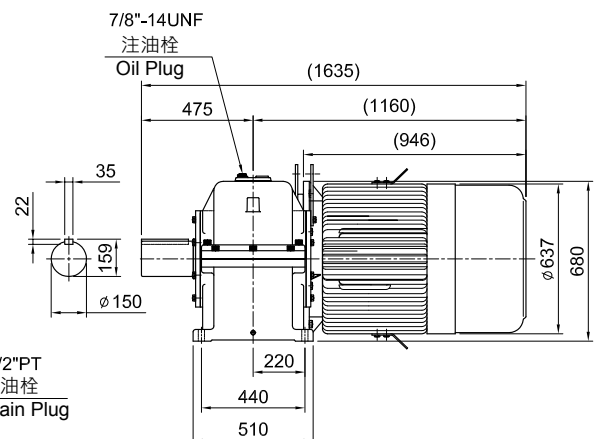
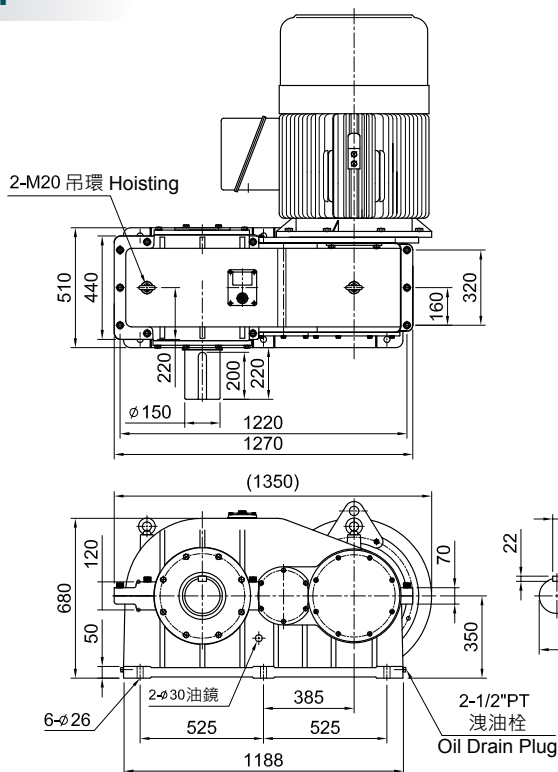
**125HP x 4P**



◆ 大型馬達 (75HP、100HP、125HP、150HP) 軸心處若有排油孔，會產生漏油現象，建議使用 BGT150 □ B 自裝式或 BGT150 □ D 雙軸式。



**150HP x 4P**



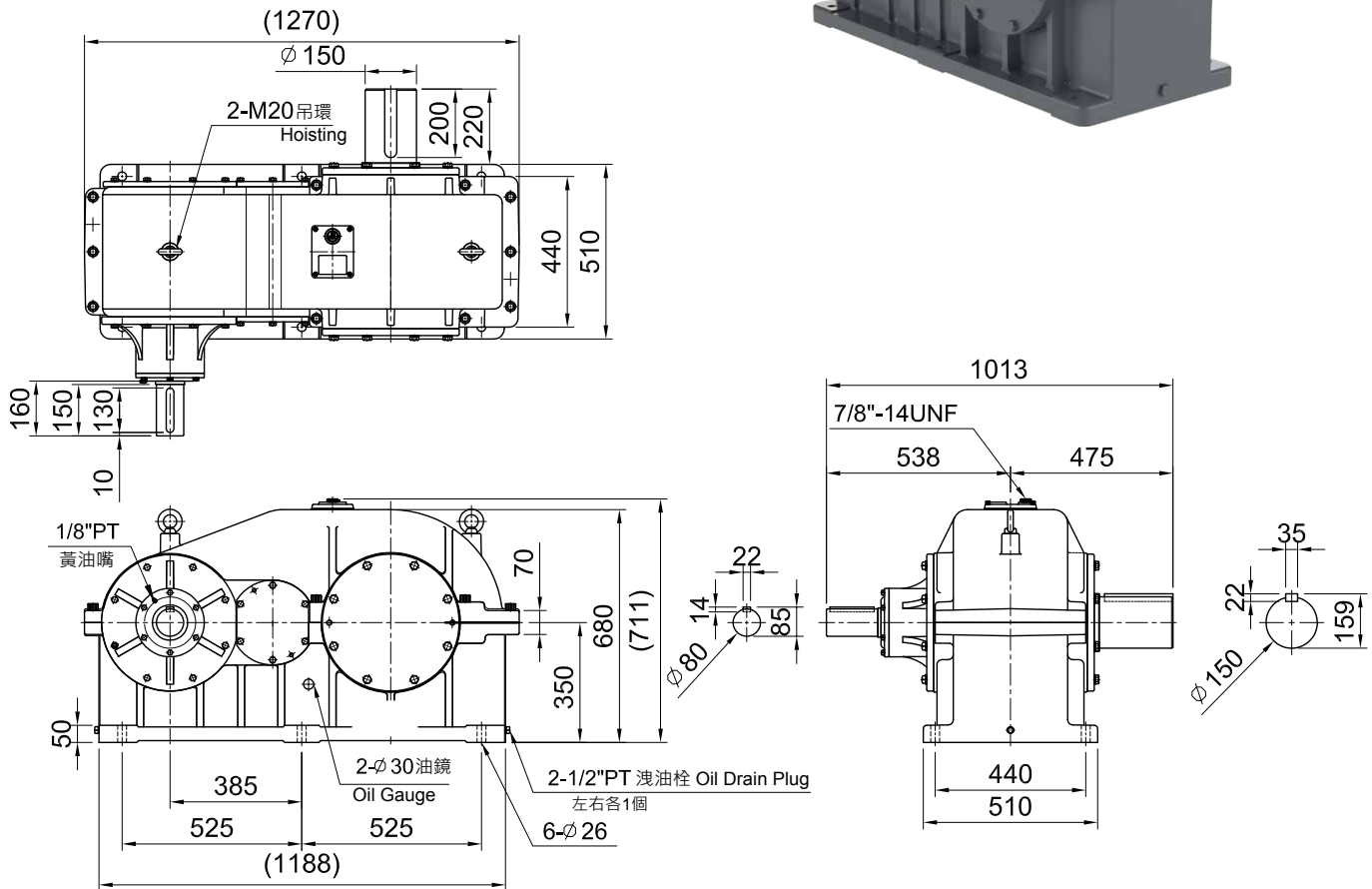
# GEARBOX SERIES

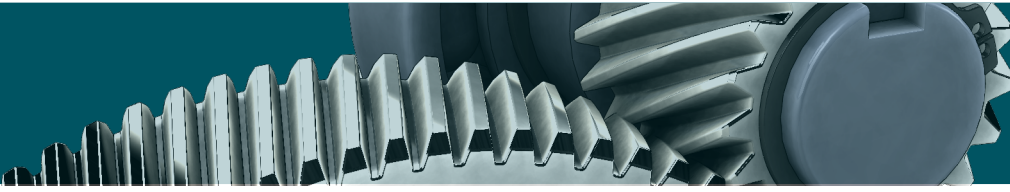
## 大型齒箱系列

MODEL : BGT150 □ D

RATIO: 10, 15, 20, 30

馬力 (HP): 75, 100, 125, 150

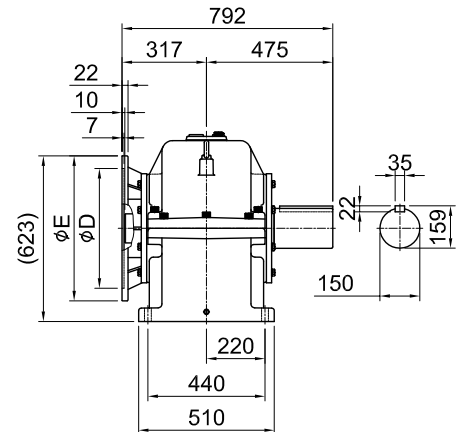
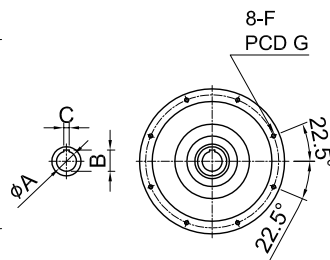
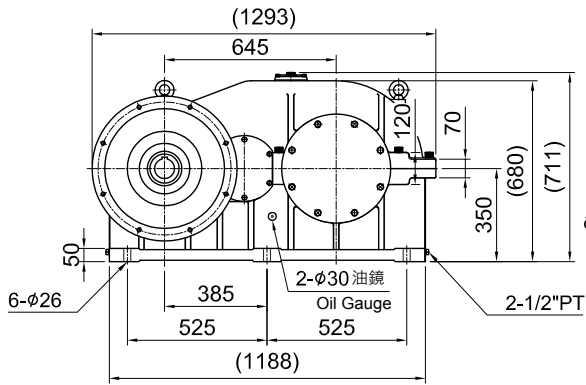
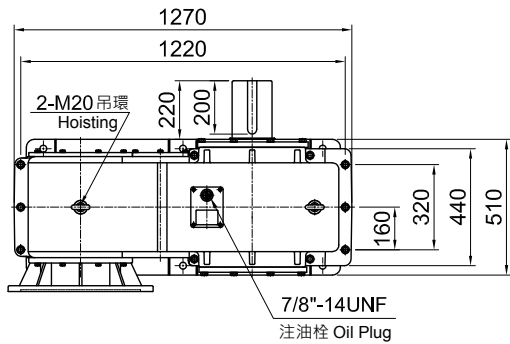




**MODEL : BGT150 □ B**

RATIO : 10, 15, 20, 30

馬力 (HP) : 75, 100, 125, 150



unit: mm

馬力 HP	A	B	C	D	E	F	G	重量 Weight (kg)
75	65	69.3	18	450	545	M16	500	
100	75	79.9	20	450	545	M16	500	
125	75	79.9	20	450	545	M16	500	
150	85	90.4	22	550	645	M20	600	